

HY2714A

DC-DC Converter Power Supply

(Document Rev A03, 12/12/15)



**+28Vdc Input
Multiple Outputs at 1679W Max Total**

Market: Mil-Cots, Industrial

Application: Electronic Equipment Rack

Features

- +28Vdc Input designed to meet Mil-Std-704F.*
- Multiple Outputs, 1379W total, including Fan Power at 300W.
- Designed to meet MIL-STD-810F Environmental. *
- Designed to meet MIL-STD-461E EMI specifications.*
- Metallic enclosed dc-dc power converter mil-cots power supply.

* Designed to meet portions of this particular standard. Contact AEGIS Power Systems for specific details.

Table 1: Maximum Ratings

Parameter	Rating	Unit	Notes
Vin max range	22 to 29	Vdc	
Temperature	-20 to +50 -40 to +85	°C	Operating Non-Operating
Output Power	1679	W	
Input power	2239	W	
+5Vdc output	800	W	Refer Table 2 (Outputs)
+3.3Vdc output	231	W	
+12Vdc output	84	W	
-12Vdc output	12	W	
+24Vdc output	252	W	
+12Vdc	300	W	Fan Power Trimmed to 13V

Product Highlights

This filtered +28Vdc input dc-dc power converter has multiple outputs available. Five outputs for customer use and one output for cooling fan power. The six factory configured outputs are (+5Vdc, +3.3Vdc, +/-12Vdc, +24Vdc, and +12Vdc fan power). Total combined output power available is 1679W. This COTS solution works well for Mil-cots and Industrial applications and is designed to meet portions of Mil-Std-704F input requirements and MIL-STD-461E EMI requirements. This power supply was developed for military mil-cots aircraft VME electronics equipment racks.

AEGIS Power Systems, Inc. specializes in the front end design, development, and manufacture of Rapid Response Custom Switching Power Supplies for Mil-COTS, defense, industrial, telecomm, aircraft, shipboard, rack mount, electric powered vehicle and military applications. Contact Aegis for specific details on what portions of a particular military standard is offered for this power converter power supply or what can be offered on your custom power supply you wish us to build.

SPECIFICATIONS

(Typical at 25°C, nominal line and 100% load, unless otherwise specified.)

Input voltage:	+28Vdc Nominal, Range 22 - 29Vdc. Designed to meet Mil-Std-704F.
Input current:	80 Amps typical at 28Vdc input.
Input power:	2239 Watts typical.
Power factor:	N/A.
Output power:	1679W Max Output (1.68KW). See Table 2 (Output Specs).
Holdup time:	N/A.
Output voltages:	+5Vdc, +3.3Vdc, +/-12Vdc, +24Vdc, +12Vdc (fan power). See table 2 for details.
Efficiency:	75% minimum efficiency at full load.
Output ripple:	See Table 2 (Output Specs).
Current Limit:	Over current protected.
Start up time:	Contact Aegis.
Voltage set point:	See Table 2 (Output Specs).
Line regulation:	See Table 2 (Output Specs).
Load regulation:	See Table 2 (Output Specs).
Temperature regulation:	±0.02%/°C.
Temperature:	-20°C to +50°C Operating and -40°C to +85°C Non-Operating.
Cooling:	Convection cooled with internal fan forced air flow.
Package:	Frame mounted inside customer equipment rack.
Dimensions:	3.2" H x 10.7" W x 15.9" L. (W=11.14 Measured with Bus Bar Connector.)
Weight:	15 lbs. Typical.
Connector:	See Table 3 and mechanical drawing.
Vibration:	Designed to meet portions of Mil-Std-810F. Call for details.
Shock:	Designed to meet portions of Mil-Std-810F. Call for details.
Humidity:	3-95% non-condensing.
EMI:	Designed to meet portions of MIL-STD-461E. (CE101, CE102, and CS101). Call for details.

Specifications subject to change without notice.

Table 2: Voltage Outputs

Parameters	V1	V2	V3	V4	V5	V6 (Fan)⁽¹⁾
Voltage	+5Vdc	+3.3Vdc	+12Vdc	-12Vdc	+24Vdc	+12Vdc
Current	160A	70A	7A	1A	10.5A	25A
Power	800W	231W	84W	12W	252W	300
Ripple	50mVpk-pk	50mVpk-pk	150mVpk-pk	150mVpk-pk	240mVpkpk	150mVpk-pk
Range	4.9 - 5.1	3.24 - 3.37	11.4 - 12.6	11.4 - 12.6	23.8 - 25.2	12.5 - 13.5
Regulation	≤0.1Vdc	≤0.066Vdc	≤0.6Vdc	≤0.6Vdc	≤1.2Vdc	≤0.6Vdc

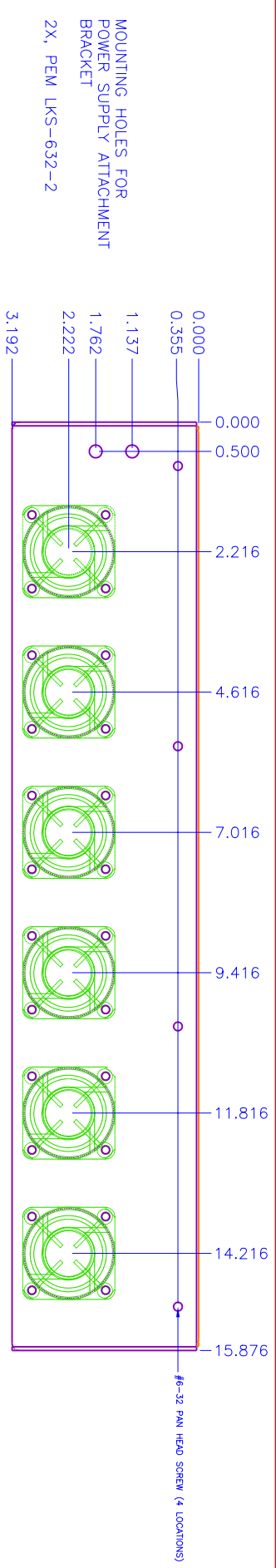
(1) Fan voltage trimmed to 13.0Vdc.

Table 3: Connections (see attached drawing)

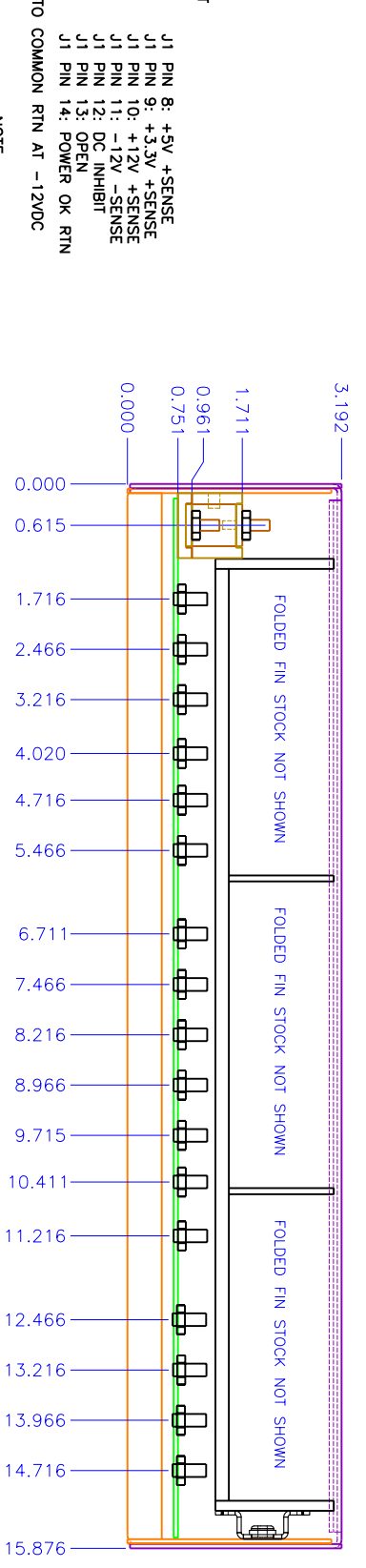
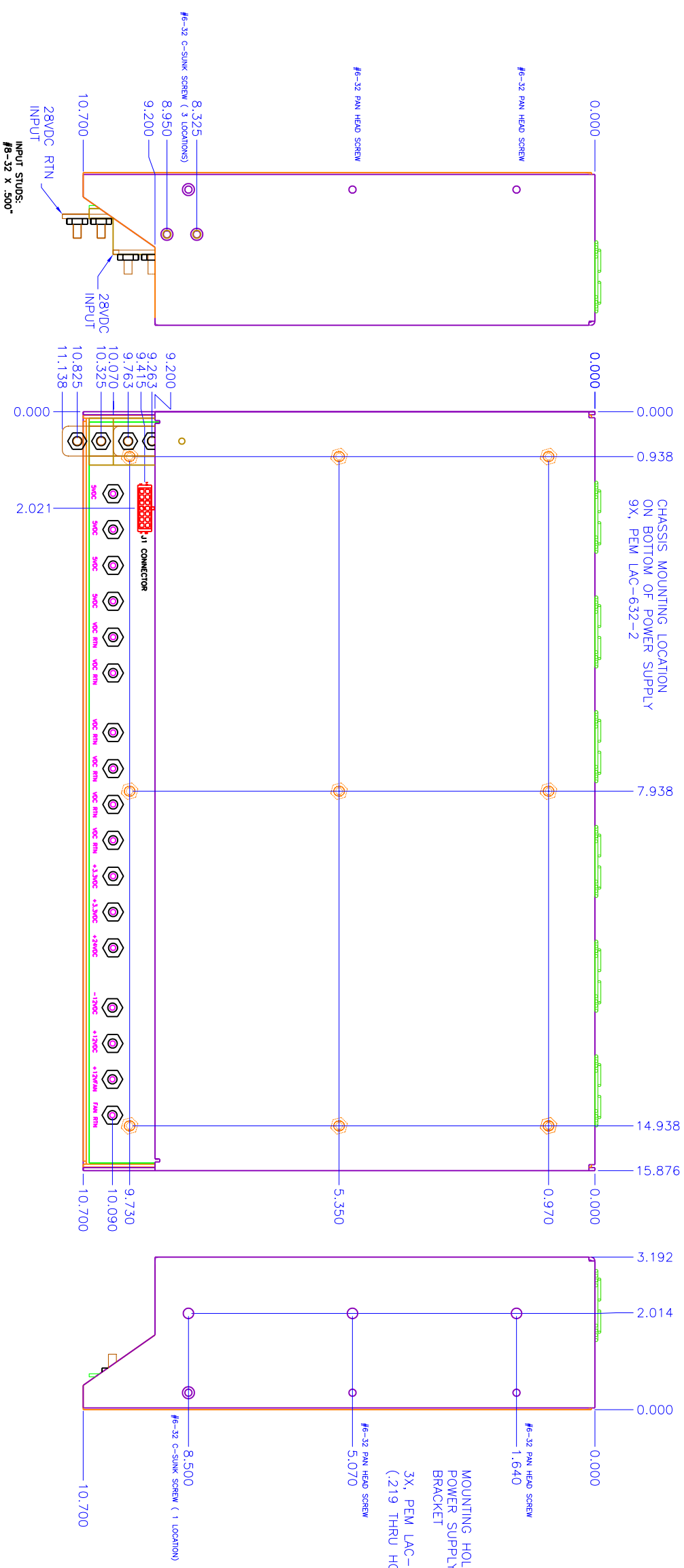
Pos Vdc Input	#8-32 Threaded Stud
Neg Vdc Input	#8-32 Threaded Stud
Pos Vdc Output	#10-24 Threaded Stud
Neg Vdc Output	#10-24 Threaded Stud

ZONE	REV	DESCRIPTION	DATE	APPROVED
A01	INITIAL RELEASE - PDR		10/22/07	MRA

REVISIONS	
SH	REV



MOUNTING HOLES FOR
POWER SUPPLY ATTACHMENT
BRACKET
3X, PEM LAC-632-2
(.219 THRU HOLE IN COVER)



J1 CONNECTOR:
MOLEX 43045-1413
14 PIN DUAL ROW MICRO-FIT

J1 PIN 1: +5V -SENSE
J1 PIN 2: +3.3V -SENSE
J1 PIN 3: +12V -SENSE
J1 PIN 4: -12V +SENSE
J1 PIN 5: DC INHIBIT
J1 PIN 6: OPEN
J1 PIN 7: POWER OK
RTN

J1 PIN 8: +5V +SENSE
J1 PIN 9: +3.3V +SENSE
J1 PIN 10: +12V +SENSE
J1 PIN 11: -12V -SENSE
J1 PIN 12: DC INHIBIT
J1 PIN 13: OPEN
J1 PIN 14: POWER OK RTN

NOTE: J1 PIN 4 CONNECTS TO COMMON RTN AT -12VDC

NOTE: DC INHIBIT CIRCUIT OPEN = MODULES ENABLED
CLOSED = MODULES DISABLED

NOTE: POWER OK CIRCUIT LOW = POWER OK
OPEN COLLECTOR = POWER FAIL

NOTE: DC INHIBIT, POWER OK, AND REMOTE SENSE PROVIDED FOR: +5V, 160 AMP; +3.3V, 70 AMP; +12V, 7.0 AMP; AND -12V, 1.0 AMP OUTPUTS.

DC INHIBIT, POWER OK, AND REMOTE SENSE ARE NOT PROVIDED FOR +24V, 10.5AMP AND 12V FAN OUTPUT.

OUTPUTS:
+5V, 160 AMP, 800W
+3.3V, 70 AMP, 231W
+12V, 7.0 AMP, 84W
-12V, 1.0 AMP, 12W
+24V, 10.5AMP, 252W
+12V, 25 AMP, 300W (FAN OUTPUT TRIMMED TO 13V)

output studs:
#10-32 x .500"

CAD MAINTAINED. CHANGES SHALL BE INCORPORATED BY THE DESIGN ACTIVITY.

UNLESS OTHERWISE SPECIFIED, DIMENSIONS ARE IN INCHES	FRACTIONS DECIMALS	TOLERANCES ARE:
N/A	.xx ± .02	DECIMALS
N/A	.xxx ± .005	DECIMALS

APPROVALS	DATE
DRW	10/22/07
CHECKED	
TRIGL. ENG.	
WFL	

TITLE	SCALE	REV
HY2714 MOUNTING DETAIL	1/1	A01

CONTRACT NO.

APPROVALS

DATE

TITLE

SCALE

REV

AGIS POWER SYSTEMS, INC. PROPRIETARY INFORMATION. NO DISCLOSURE, REPRODUCTION, OR USE OF ANY PART HEREOF MAY BE MADE EXCEPT BY EXPRESS WRITTEN PERMISSION OF AGIS POWER SYSTEMS, INC.

AGIS P/N: MSHHY2714

MURPHY, NORTH CAROLINA

HY2714-M10

SHEET 1 OF 1